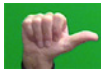


Appendix: List of handshapes

In this section, we report the labels we adopted to refer to LIS *handshapes*. Notice that these conventions are followed in all the Parts of the grammar.



S



G



Curved open G



Closed G



3/5



I



L



Flat open L



Flat closed L



Curved open L



F



Flat open F



Flat closed F



Curved open F



8



V



Unspread V



Curved open V



Y



U



3



Flat open 3



Flat closed 3



Cured open 3



4



Flat open
4



5



Unspread 5



Flat open 5



Flat closed 5



Spread
curved
open 5



Unspread
curved open
5



Curved
closed 5



Closed 5

